

# RANGER BGS® 2.0 Ws

Art. No. 203027



**CE EN ISO 20347:2012 O2 HRO HI CI WR FO SRC**

Leather thickness 2.0 – 2.2 mm, waterproof and breathable with GORE-TEX® Performance, leg height 17 cm, antistatic, sole 024

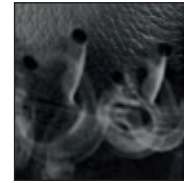
**Available sizes men UK 3 – 9**



203027



HAIX® Vario Wide Fit System



HAIX® Climate System



Certified winter insole



Tip protection



## Upper Material

Waterproof leather, hydrophobic, breath-able, 2.0 – 2.2 mm thick

## Inner Lining

GORE-TEX® Performance; waterproof and breathable. Highly abrasion-resistant lining with fleece midlayer. Optimized climate comfort for all year seasons and excessive use. Increased chemical protection.

## Inner sole

Moisture-absorbing synthetic/fleece inner sole. Dimensionally stable, torsion-resistant, reduces punctual pressure (e.g. caused by stones or sharp objects).

## Foot bed

Anatomically shaped insole with excellent moisture absorption and rapid drying, replaceable and washable.

## Sole

Rubber/PU sole with proven street/terrain tread, abrasion-resistant and anti-slip. Optimum step and bend behaviour thanks to the sporty toe and heel rounding. The PU midsole provides excellent cold and heat insulation against the ground; non chalking and antistatic according to EN ISO 20347:2012.

## HAIX® Climate System

The HAIX® Climate system uses the pumping movement, which permits air circulation with every step – warm air is released and fresh air comes in through the vent holes at the top of the boot.

## HAIX® Absorption

Absorption with cushioning wedge which is built into the sole.

## HAIX® CO System

Pressure relief, cushioning, correction of foot position correct posture and muscular balance.

## Sun Reflect

Reduces the heating effect of the upper leather by direct sunlight. Sunlight is reflected by the leather, keeping the leather and the feet cooler.

## HAIX® Vario Wide Fit System

The width of the shoe can be individually adjusted by three different insoles. The shoe is supplied with a red insole (medium). A yellow insole (wide) and blue insole (narrow) can be ordered separately.

## Others

Additional tip protection, certified winter insole (Art. No. 901458) separately available

UK	3	3½	4	4½	5	5½	6	6½	7	7½	8	8½	9	9½	10	10½	11	11½	12	12½	13	13½	14	14½	15
EU	35	36	37	37	38	39	39	40	41	41	42	43	43	44	45	45	46	47	47	48	48	49	50	50	51
US	4	4½	5	5½	6	6½	7	7½	8	8½	9	9½	10	10½	11	11½	12	12½	13	13½	14	14½	15	15½	16

## HAIX®-Schuhe, Produktions- und Vertriebs GmbH

Auhofstrasse 10, 84048 Mainburg, Germany  
T. +49(0)8751/8625-0, F. +49(0)8751/8625-25  
info@haix.de, www.haix.com