

PROTECTOR PRO 2.0

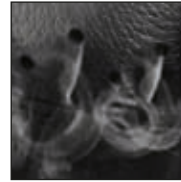
Art. No. 602019



**CE 0193 EN ISO 20345:2011 S3 HRO HI CI WR SRC
CE EN ISO 17249:2013 + AC:2014 - LEVEL 1**

Leather thickness 2,5 – 2,7 mm, Cut Protection Level 1, waterproof and breathable with GORE-TEX® Performance, leg height 23 cm, antistatic, sole 020

Available sizes UK 5 – 12, Extra large sizes UK 13 / 14



HAIX® Climate System



Cut Protection Level 1



RTC with countersunk seams



602019

Upper Material

Waterproof leather, hydrophobic, breathable (4,0 mg/cm²/h), 2,5 – 2,7 mm thick

Cut Protection

Protection against cuts certified with cut level 1 (20 m/sec.). Compliant with EN ISO 17249:2013 + AC:2014.

Inner lining

GORE-TEX® Performance; waterproof and breathable. Highly abrasion-resistant lining with fleece midlayer. Optimized climate comfort for all year seasons and excessive use. Increased chemical protection.

Plastic/fleece insole

Moisture absorbent, anti-torsion design for outstanding stability, reducing point pressure (from stones, etc.).

Foot bed

Anatomically formed, exchangeable, washable, very good moisture absorption, dries quickly.

HAIX® Protective steel toe cap

Anatomically formed protective steel toe cap meets the highest safety requirements.

HAIX® Protective sole

Flexible, lightweight and puncture resistant metal midsole.

Sole

Rubber/PU walking sole with proven street/terrain tread, wear resistant and non-slip traction; large, bevelled contact surface and superior bending comfort. Excellent cold/heat insulation, fuel resistant and non-marking characteristics. Compliant with EN ISO 20345:2011.

HAIX® Climate System

The HAIX® Climate system uses the pumping movement, which permits air circulation with every step – moist air is released and fresh air comes in through the vent holes at the top of the boot.

HAIX® CO System

Pressure relief, cushioning, correction of foot position correct posture and muscular balance.

Sun Reflect

Reduces the heating effect of the upper leather by direct sunlight. Sunlight is reflected by the leather, keeping the leather and the feet cooler.

GRIP+ Spikes

Metal spikes that screw into the shoe sole provide extra grip and prevent slipping on branches and felled tree trunks.

Others

Lacing system with eyelets permitting smooth movement, clamps and hooks, integrated heel bend, no side seams, rubber toe cap, possibility to screw in spikes, pulling strap

UK	3	3½	4	4½	5	5½	6	6½	7	7½	8	8½	9	9½	10	10½	11	11½	12	12½	13	13½	14	14½	15
EU	35	36	37	37	38	39	39	40	41	41	42	43	43	44	45	45	46	47	47	48	48	49	50	50	51
US	4	4½	5	5½	6	6½	7	7½	8	8½	9	9½	10	10½	11	11½	12	12½	13	13½	14	14½	15	15½	16

HAIX®-Schuhe, Produktions- und Vertriebs GmbH

Auhofstrasse 10, 84048 Mainburg, Germany
T. +49(0)8751/8625-0, F. +49(0)8751/8625-25
info@haix.de, www.haix.com